



EMINENT
TECHNOLOGIES

Line Card

*Specializing in Custom Technology
Solutions*

Eminent Technologies

A Manufacturers Representative

- Incorporated 2007
- Headquartered in Orange County, California
- Covering Los Angeles, Orange, San Diego and Riverside Counties as well as parts of Mexico.
- Eminent's sales team has over 150 years of technology experience in the Southern California market
- Each of our sales personnel averages more than 30 years technology sales experience in the Southern California market.
- Key long standing relationships with the Tier 1 and Tier 2 customers in the Southern California market.

Eminent Line Card



➤ TTM

- Rigid, Rigid-Flex and Flex Printed Circuit Boards and Electro-Mechanical Solutions
- Top 10 Global manufacturer of PCB's
- ~\$2.6B estimated Sales
- 26 world wide facilities (12 China facilities and 14 North American sites)
- Seamless manufacturing – choose from local North America facilities and seamlessly transfer to China for high volume production.
- ITAR, MIL-PRF-31032, MIL-PRF-55110, ISO 9001, ISO/TS 16949, TL 9000, AS9100, ISO 14001:2004, UL796, ISO/IEC 17025:2005, Bellcore Compliant, ISO 14064
- Target volumes - low single lot quick turn, NPI, pre-production to mass production
- DFM services
- Layers - from 2 through 60 layers
- High Density Interconnect / High Layer Count
- Advanced Type III HDI
- Micro Via Solutions
- Via-in-Pad & Copper Filled Micro Via
- RoHS Compliant Products and Leaded Capable Manufacturing and Materials
- High Aspect Ratio Plating
- Aspect Ratios as high as 18:1
- RF / Microwave Applications
- Thermal Management Solutions
- Buried Capacitance ZBC Licensed
- Back Drilling
- Heavy Copper UL up to 3oz (do up to 6 oz)
- Complex Backplanes (24" x 50") up to 400 mils thick

Eminent Line Card



Corporate Background:

- Providing interconnect solutions inclusive of standard products to customer engineered requirements and world class antenna solutions

Capabilities:

- Design and hands-on engineering support for US manufacturing and distribution of frequency management and IoT related products including precision crystal oscillators ~ VCXO s, TCXOs, OCXO's, ceramic resonators, microwave components ~ VCO's, PLL 's, custom modules, Filters, LTCC products ~ Baluns & Diplexers.
- A comprehensive offering of audio components including speakers, piezo and electromagnetic transducers, buzzers and alarms, piezo elements and electret condenser and MEMS microphones.
- Comprehensive portfolio of antennas, RF connectors & cable assemblies.

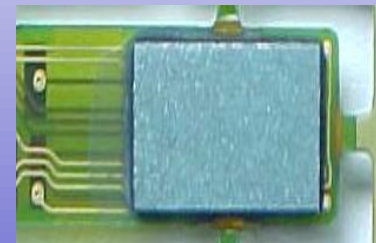
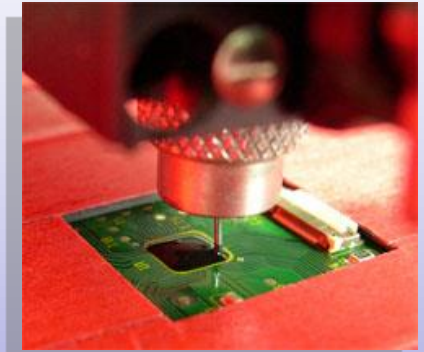
Eminent Line Card



HANA Microelectronics Public Co., Ltd.

➤ Hana Microelectronics

- Annual Revenue \$500M
- **Semiconductor Packaging and Test**
 - Capabilities:
 - Assembly and test of low/medium IO IC's.
 - Custom packages and optoelectronic devices.
- **Contract Manufacturing**
 - Capabilities
 - Chip On Board
 - Chip On Flex
 - Flip Chip
 - PCB Assembly
 - Hybrid Modules

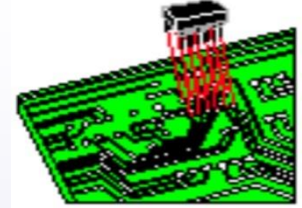


➤ www.hanagroup.com



- Full Turn-Key Analog, Mixed-Signal ASIC Supplier
- World-Class team of Analog Design and Test Engineers
- ISO9001 and ITAR Certified
- Support Commercial, Industrial, Medical, Automotive and Military / Aerospace markets
- Over 300 tape-outs since founded in 1996
- All design work and prototype/production testing performed in-house at 30,000 sq ft corporate headquarters located in Irvine, California.

Eminent Line Card



➤ Ultra Circuits Design

➤ **PCB Design Capabilities**

- 30 Years of Experience in PCB Design and DFM Engineering
- Full PCB DFM Support
- Complex PCB Design
- Commercial and Military Experience
- High Speed Digital, RF and Analog Designs
- Blind and Buried Via
- HDI Micro Via and Via in Pad
- Packages
 - SMT, Thru Hole, Hybrid Boards
 - BGA, Micro BGA, CSP, FCP
 - Pitches 1.2 mm, 1.0 mm, 0.8 mm, 0.5 mm
- Impedance Control
 - Microstrip, Coated Microstrip, Coplanar Microstrip
 - Centered Stripline, Off Center Stripline, Dual Stripline
 - Horizontal Differential Pairs, Broadside Differential Pairs
- Matched Line Lengths
- High Current

Standard Deliverables

- Allegro Design Data Base
- Valor ODB ++
- Gerber Data
- IPC-D-356 Net List
- NC Drill Data
- Fabrication & Assembly Drawing
- PDF, PLT or DXF Format
- SMT Stencil
- Component Placement Files

Tools

- Cadence Allegro Design Suite
- Valor/Frontline Genesis 2000
- Downstream Technology CAM350

CONFIDENTIAL



EMINENT

TECHNOLOGIES



THANK YOU!